

# Līhu'e Civic Center Mobility Plan



## Jodi Higuchi Sayegusa

### Deputy Director, County of Kaua'i Department of Planning

Jodi has served as the Deputy Director of the Kaua'i Planning Department since 2019. Prior to joining the Planning Department, Jodi worked as a Deputy County Attorney representing the Department of Public Works and Planning Department since 2011. Jodi is a graduate of the William S. Richardson School of Law. Jodi served as a law clerk for Judge Randal K.O. Lee for the First Circuit Court.



## Alan Clinton

### Administrative Planning Officer, County of Kaua'i Department of Planning

Alan is a Planning and GIS Professional serving as the Administrative Planning Officer at the County of Kaua'i's Planning Department working at the nexus of Long Range & Regulatory Planning with an emphasis on Placemaking programs and technology solutions. Alan earned a Bachelor's of Science degree in Natural Resources and Environmental Science from Purdue University, a Master's of Science degree in Geography from Lund University and a Master's of City and Regional Planning Professional degree from Ohio State University. Alan is the Chairperson the Hawaii Commission for National and Community Service.



## Ezra Pincus-Roth, AICP

### Senior Transportation Planner, Nelson\Nygaard Consulting Associates

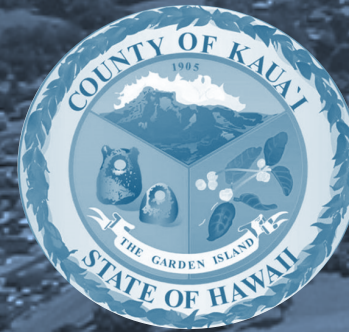
Ezra is an expert on transit-oriented development (TOD), with more than a decade of experience working in municipal policy analysis, regional transit coordination, and urban planning implementation. With a mindfulness around including and listening to community members of all ages and abilities, Ezra is also skilled at coordinating public forums, training sessions, and data collection teams in a variety of venues. Ezra has managed a variety of projects specifically in Hawai'i, including the most recent update to the Statewide Coordinated-Human Services Transit Plan for the Hawai'i Department of Transportation (HDOT), zoning code reform guidance for the Hawai'i State Office of the American Association of Retired Persons (AARP), and mobility hub plans for the County of Kaua'i.





November 17, 2023

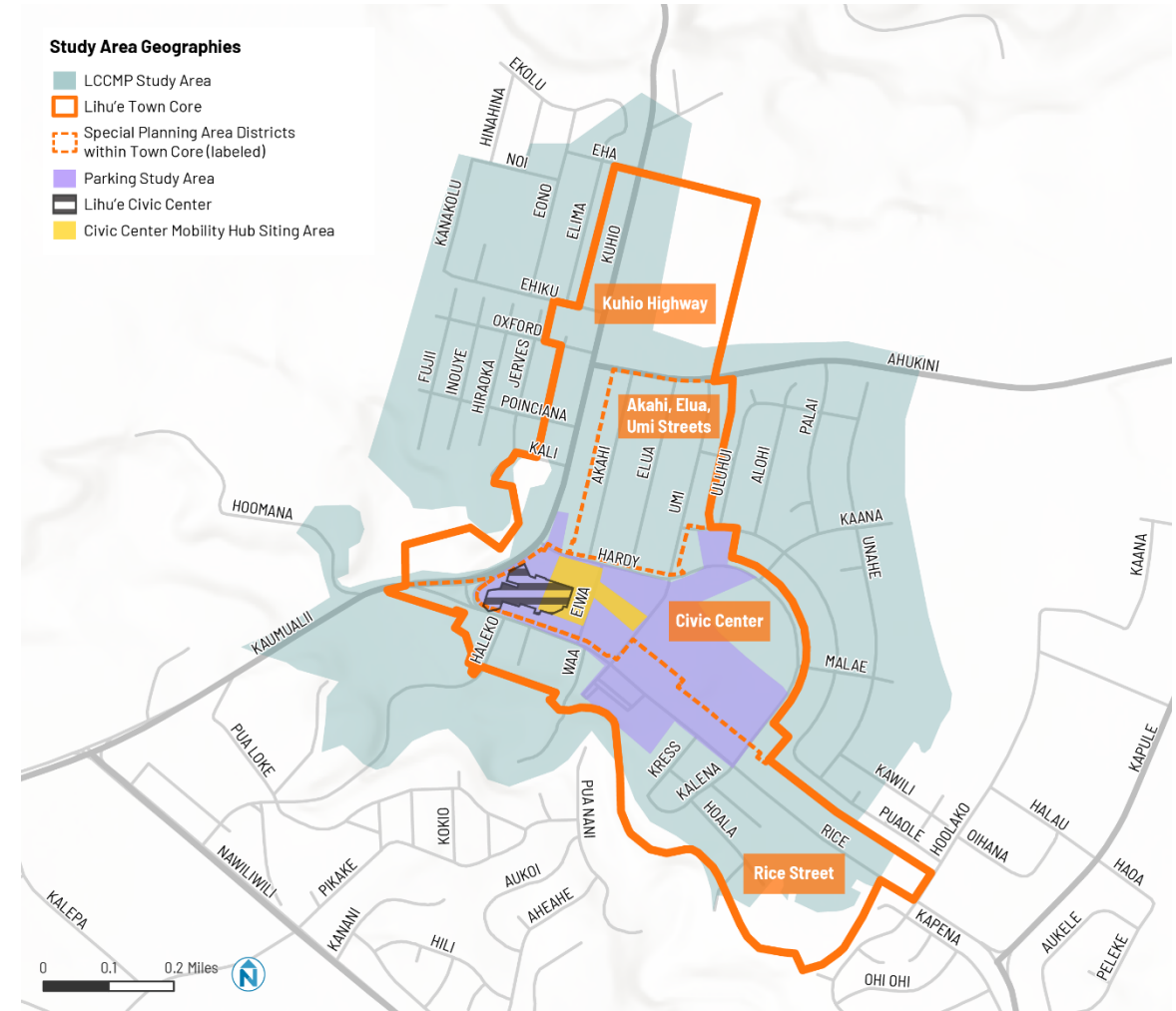
# Līhu'e Civic Center Mobility Plan



# Today's Agenda

- Plan Purpose
- Key Findings
- Design Recommendations
- Policy Recommendations
- Implementation Considerations

*This project was funded through an appropriation by the Hawai'i State Legislature for transit-oriented development planning in Act 6, Session Laws of Hawai'i 2020.*



# What is the purpose of the Civic Center Mobility Plan?

1

**Incorporate mobility as a framework to strengthen future development**

2

**Build upon recent planning efforts**

3

**Update guidance for sustainable transportation improvements**

# What did we analyze?



## References to Previous Plans

- Līhu'e Town Core Plan (2010)
- Parking Audit Workshop for Līhu'e Town Center (2014)
- Līhu'e Community Plan (2015)
- Kaua'i Kākou General Plan (2018)
- Rice Street Revitalization (2021)
- HDOT Senate Bill 1402 (2021)



## Community Insights

- Stakeholder Interviews
- Employee and Visitor Survey
- Site Walking Tour
- Meetings, Presentations, Workshops



## Data Analysis

- ACS / LEHD Population Data
- Transit Use
- Parking Counts / Demand Modeling
- Bicycle Infrastructure
- Survey Results

# Overview of Findings



Līhu'e is the **primary growth** area on the island.



Līhu'e lacks **consistent and safe connections** to the pedestrian and bike network.

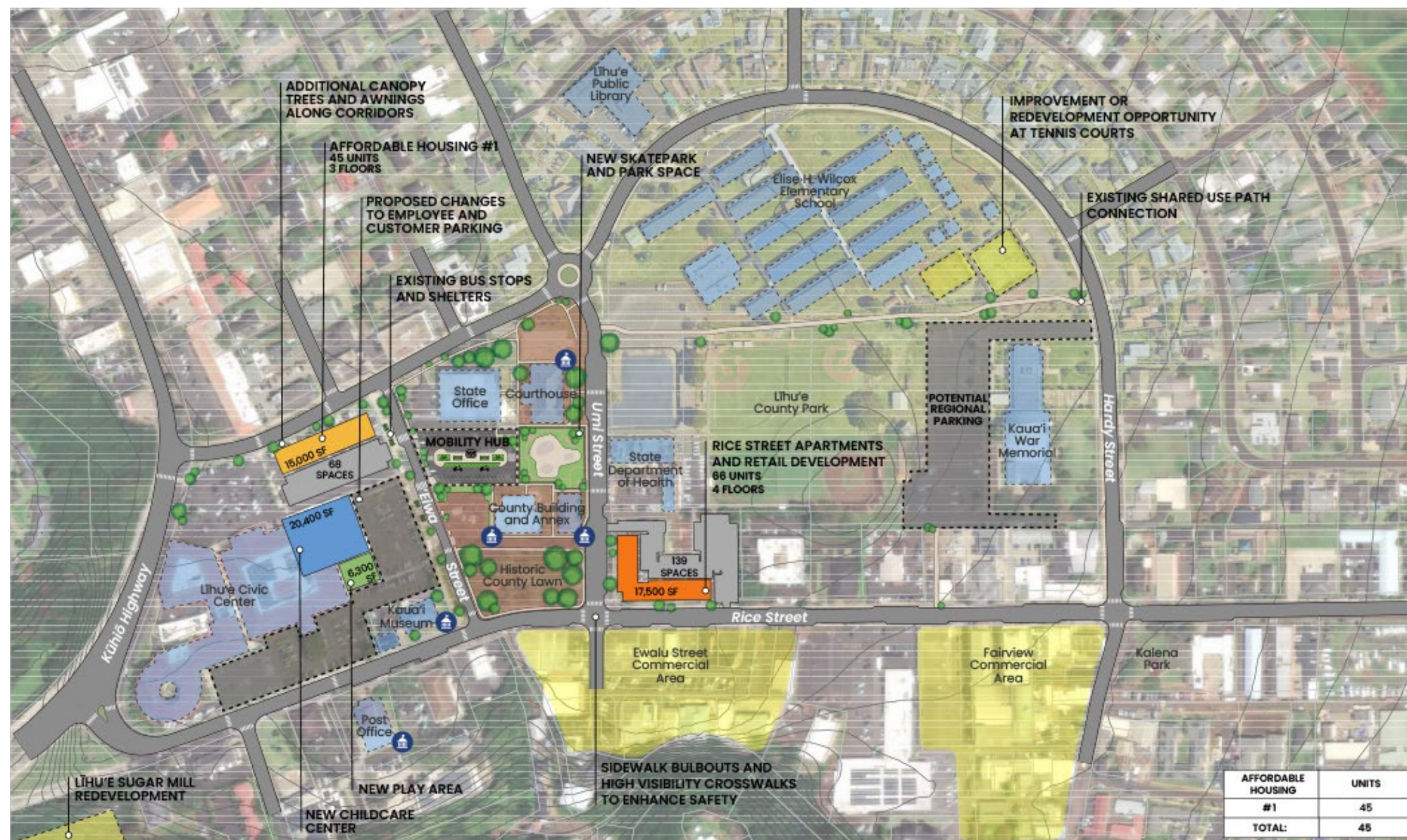


Only **one of every 8 commuters** chooses a transportation mode other than a car.



Parking can be a **stressful experience**.



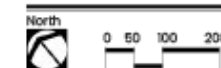


## LEGEND

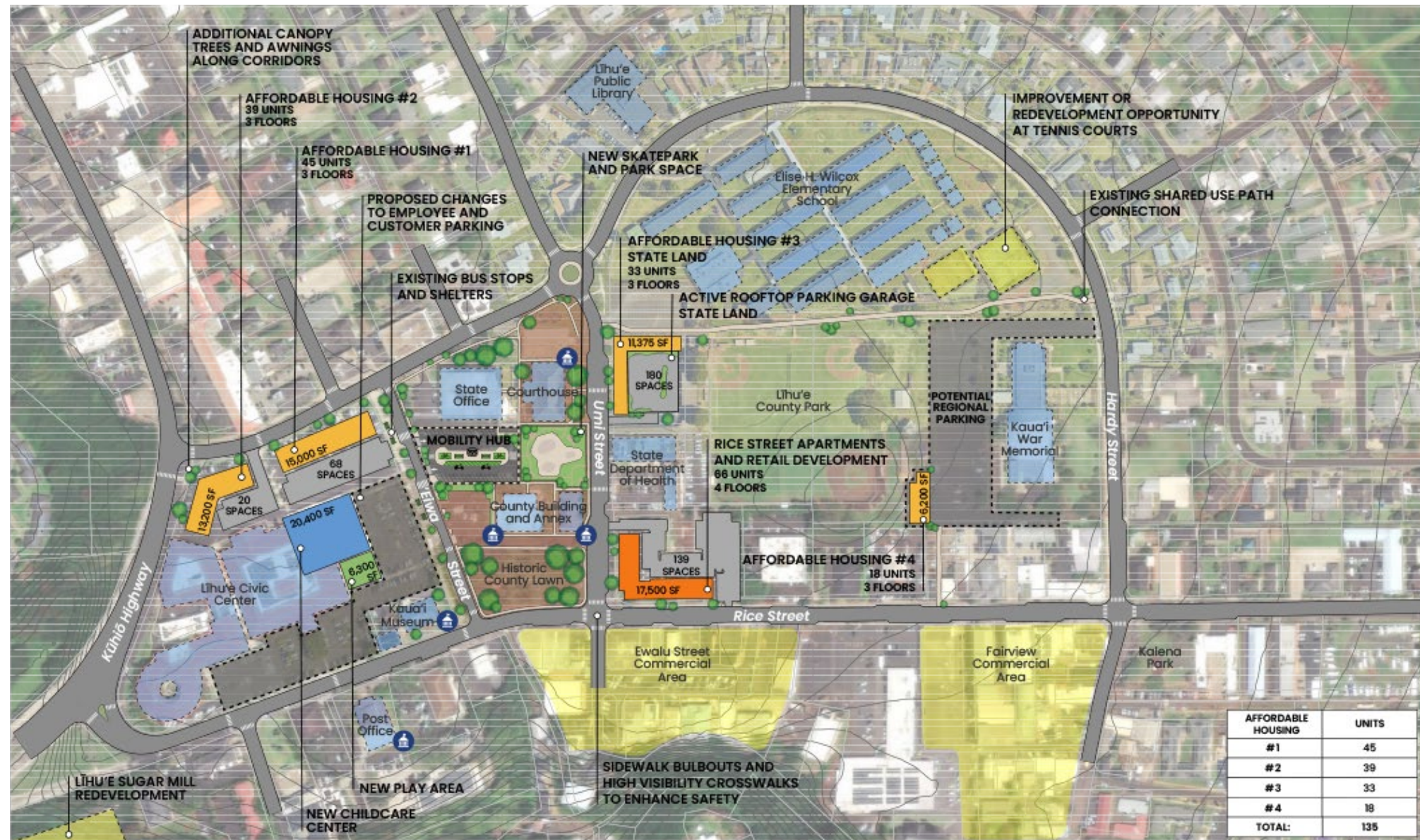
- Existing Government Buildings
- Proposed Government Buildings
- Potential Affordable Housing
- Planned Affordable Housing
- Affordable Housing Parking
- Mobility Improvements
- Lihue Civic Center Historic District
- Existing and Future Activity Nodes
- Buildings on State and/or National Historic Registers
- Mobility Hub Amenities

Source: County of Kauai, 2021; County of Kauai Department of Public Works, 2019; Esri Online Basemap.  
Disclaimer: This graphic has been prepared for general planning purposes only.

## DEVELOPMENT SCENARIO 1 Lihue Civic Center Mobility Study





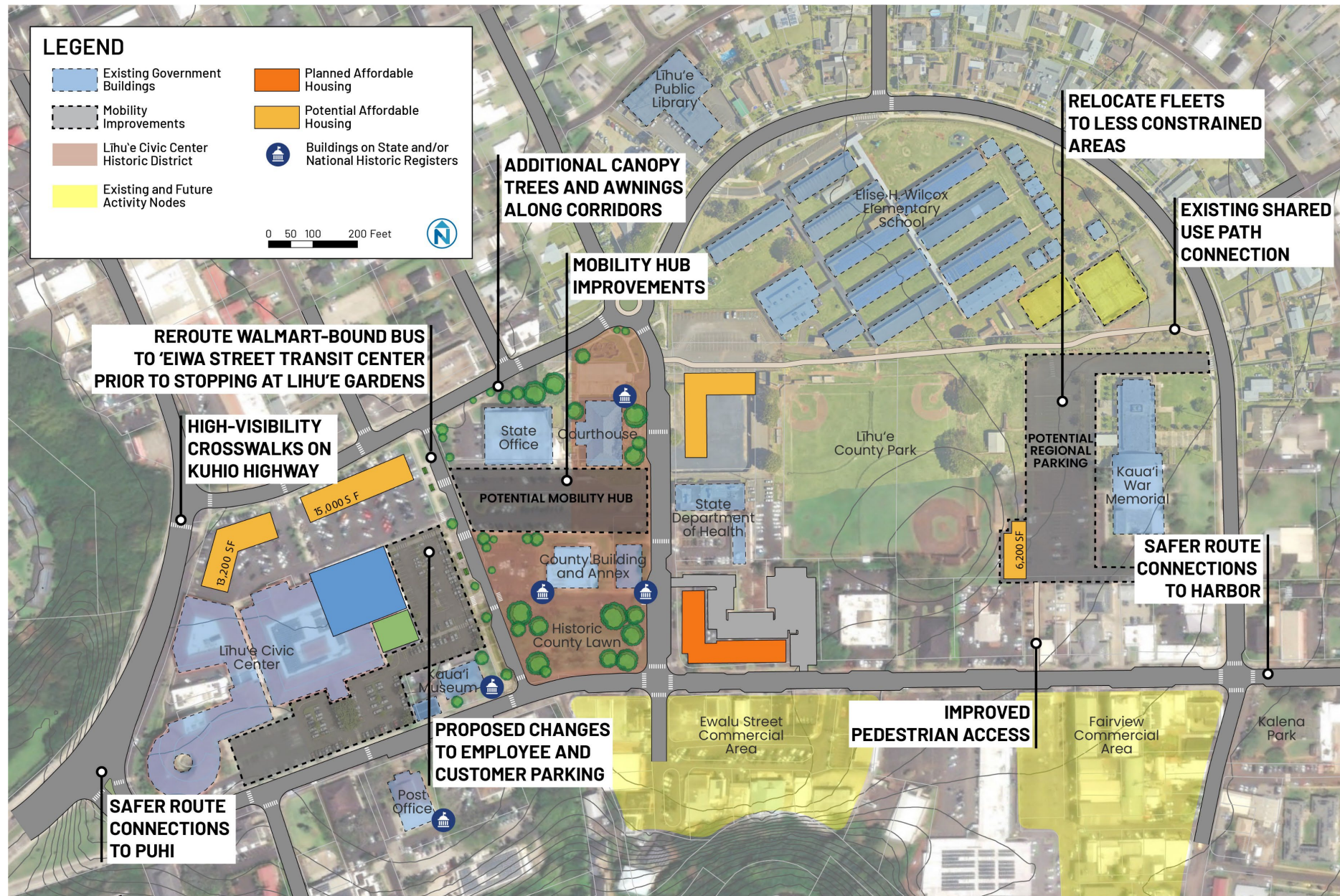


Source: County of Kauai, 2021; County of Kauai Department of Public Works, 2019; Esri Online Basemap.  
Disclaimer: This graphic has been prepared for general planning purposes only.

## DEVELOPMENT SCENARIO 2 Lihue Civic Center Mobility Study







# Overview of Policy Recommendations



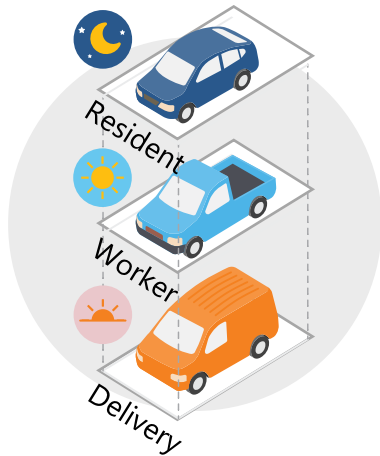
Requiring TDM for All  
New Development



Set Parking Utilization Targets



Create a Parking Benefit District



Encourage Shared Parking



Revise Parking Requirements



Invest in Bus Drivers and  
Operations Staff



Eliminate Barriers to  
Shared Mobility Spaces



# Final Considerations

- Taking a human centered approach
- Shifting the focus from planning to action
- Keeping pilot programs flexible
- Together everyone accomplishes more





# Questions?





# Thank you!

*This project was funded through an appropriation by the  
Hawai'i State Legislature for transit-oriented development  
planning in Act 6, Session Laws of Hawai'i 2020.*